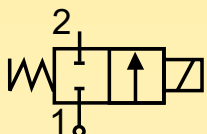


Solenoid valves for heating

2/2 way - Normally Closed - Direct Operated

Fittings: G = 1/8" - 1/4"

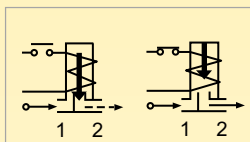
Series **140**



N.C.

Normally closed

Coil energised - open
Coil de-energised - closed



General description:

PARKER series 140 solenoid valves are direct operated and do not require a minimum differential pressure to operate. They are used for general applications with media such as **fuel oils, diesel oil or naphtha up to 7°E**, provided they are compatible with the construction materials used. Series 140 valves are **normally closed**.

Temperatures:

The working temperature for media is:
maximum +140°C
minimum -30°C

The maximum ambient temperature is:
with class "F" coils +50°C
with class "H" coils +80°C

Application:

Series 140 solenoid valves are ideal for automatic and safe control of fuel oils up to 7°E on pressurised burners.

Coils:

For the series 140 class "F" coils (155°C) are available encapsulated in thermoplastic material containing 30% glass fiber (types: ZB, YB), and class "H" coils (180°C) are available encapsulated in thermoplastic material containing 40% of glass fiber (type ZH).

All the coils are for continuous service, 100% E.D.

The rated voltage tolerance is:
±10% for A.C. power supply and
+10% -5% in D.C.

The "Z" and "Y" coils can be used on a.c. with a frequency of 50/60 Hz (dualfrequency).

The "Z" coils have Faston terminals for **DIN 43650A** connector with protection to **IP65**. The "Y" coil has terminals with 2 x 1,000 mm cable and protection to **IP67**.

The "X" coils has Faston terminals for plug with cable (box) with protection to **IP54**.

Installation:

The valves can be mounted in any position without jeopardising their operation. It is however advisable to install them with the coil in a vertical position above the body. The model 140.4 has no mounting hole.

Approvals:



- For the coils:
ZB 09 15V/50-60Hz, 220-230V/50-60Hz, 240V/50-60Hz
ZH 09 24V/50-60Hz
ZH 12 12VDC, 24VDC
YB 09 220-230V/50-60Hz



- For the coil:
ZB 09 220-230V/50-60Hz, 240V/50-60Hz
YB 09 220-230V/50-60Hz



- UL Recognized Comp. coils mark:
ZB 09 24V/60Hz, 110-120V/60Hz, 208-240V/60Hz
YB 09 24V/60Hz, 110-120V/60Hz, 208-240V/60Hz



Series **140**

MATERIALS	• Valve body:	CW617N UNI EN 12165:98 brass stamping
	• Seals:	Ruby
	• Enclosing tube:	AISI 304 stainless steel
	• Plunger:	AISI 430F stainless steel
	• Spring:	AISI 302 stainless steel
	• Shading ring:	Copper
• Fitted sit:	AISI 304 stainless steel	

ELECTRICAL FEATURES	Coil type []		Power [W]		Insulat. class
	A.C.(~)	D.C.(=)	A.C.(~)	D.C.(=)	
	ZB 09	ZB 12	9	12	F
	YB 09	YB 12	9	12	F
	ZH 09	ZH 12	9	12	H
	ZH 14	-	14	-	H
	XP 07	-	7	-	F

SPECIFICATION	Fittings Ø G	Valve type	Nominal orifice Ø	Flow coefficient Kv	Minimum pressure	Max differential pressure (M.O.P.D.)		Coil type	Weight	Notes
	["]	[]	[mm]	[m³/h]	[bar]	in A.C.(~) [bar]	in D.C.(=) [bar]	[]	[Kg]	[]
	1/8	140 I	2,5	0,192	0	30	17	ZB - YB	0,340	1
1/4	140 C	2,5	0,192	0	30	17	ZB - YB - XP	0,330	1	
1/4	140 D	3,0	0,258	0	30	12	ZB - YB	0,330	1	
1/8	140.4 A	3,0	0,240	0	30	-	ZH	0,320	1	
1/4	140.4 D	3,0	0,240	0	30	-	ZH	0,320	1	

Note: 1) NP (nominal pressure): 64 bar.

DIMENSIONS

drg. 1

drg. 2

TYPE	A	B	C	D
["]	[mm]	[mm]	[mm]	[mm]
140-I-C-D*	40	75,5	18	37,5
140 CRX	40	75,5	18	37,5
140.4A-D*	40	71	18	37,5

*drg. 2

ORDER CODE

PM

VALVE BODY

140

FITTINGS

I	1/8"
C	1/4"
D	1/4"
• 4 A	1/8"
• 4 D	1/4"

R

SEAL

R	Ruby
---	------

SERIES

Coil type	[V]				[Hz]/d.c.	
	24 V 50/60 Hz	115V 50/60 Hz	220-230 V 50/60 Hz	240 V 50/60 Hz	12 V d.c.	24 V d.c.
ZB 09	●	●	●	●		
ZH 09	●					
ZB 12					●	●
ZH 12					●	●
YB 09	●	●	●			
YB 12					●	●
ZH 14	●	●	●			
Coil type	220 V / 50 Hz					
XP 07			●			

Coil type	24 V / 60 Hz	110-120 V / 60 Hz	208-240 V / 60 Hz
ZB 09 UL	●	●	●
YB 09 UL	●	●	●

Note: Valve supplied with body (PM) and coil separate. Connectors to be ordered separately.