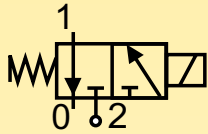


Solenoid Valves for Automation

3/2 way - Normally Closed - Direct operated

Fittings: G = 1/8"

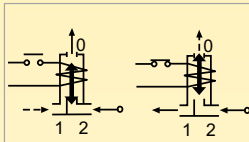
Series **N79**



N.C.

Normally closed

Coil energised - open
Coil de-energised - closed



General description:

PARKER series **N79** solenoid valves have direct action and are used in systems for pressurisation and automatic discharge of media when small overall dimensions and low power consumption are required. They are suitable for general applications with media such as **water, air, light oils (2°E) and inert gases**, provided they are compatible with the construction materials used. Series **N79** valves are **normally closed**. For large orders, valves are available on request with **manual operator**.

Temperatures:

The working temperature for media is:
maximum **+140°C**
minimum **-10°C**
The maximum ambient temperature is:
+50°C

Application:

Series **N79** solenoid valves are ideal for automatic control of media where low flow rates are required.

Some typical application examples:

- Exhaust gas analysers;
- Sterilisers;
- Scientific equipment;
- Electrical medical equipment;
- Automatic dispensers;
- Pilot valves.

Coils:

For series **N79** valves the WB class "**F**" coil (**155°C**), encapsulated in thermoplastic containing 30% glass fiber, is used. The coil is for continuous service, 100% E.D.

The rated voltage tolerance is:
±10% for A.C. power supply and
+10% -5% for D.C.

The "**W**" coil can be used on a.c. with frequency of 50/60Hz (dualfrequency) and has Faston terminals for **DIN 43650B** connector with protection to **IP65**.

Installation:

The valves can be mounted in any position without jeopardising their operation. It is however advisable to install them with the coil in a vertical position above the body.

Approvals:



• Coil certification:
WB 4,5 115V/50-60Hz, 220-230V/50-60Hz



• For the coil:
WB 4,5 115V/50-60Hz, 220-230V/50-60Hz



• UL Recognized Comp. coils mark:
WB 4,5 24V/60Hz, 110-120V/60Hz,
208-240V/60Hz



Series **N79**

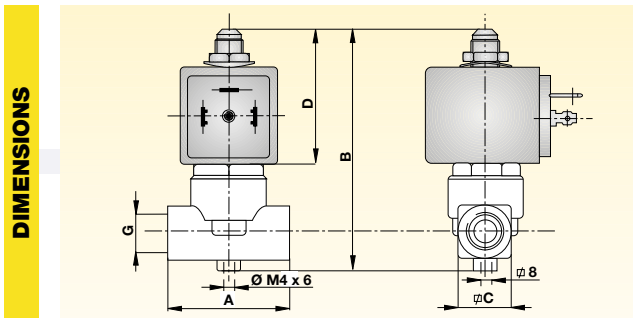
for: water - air - light oils (2°E) - inert gases

MATERIALS	• Valve body:	CW617N UNI EN 12165:98 brass stamping
	• Seals:	Viton
	• Enclosing tube:	AISI 303 stainless steel
	• Plunger:	AISI 430F stainless steel
	• Spring:	AISI 302 stainless steel
	• Shading ring:	Copper

ELECTRICAL FEATURES	Coil type []		Power [W]		Insulat. class
	A.C.(~)	D.C.(=)	A.C.(~)	D.C.(=)	
	WB 4,5	WB 5,0	4,5	5,0	F

SPECIFICATION	Fittings Ø G	Valve type	Nominal orifice Ø	Flow coefficient Kv	Minimum pressure	Max differential pressure (M.O.P.D.)		Coil type	Weight	Notes
	["]	[]	[mm]	[m³/h]	[bar]	in A.C.(~) [bar]	in D.C.(=) [bar]	[]	[Kg]	[]
	1/8	N79.4 I	1,2 (1,6)*	0,04	0	10	10	W	0,14	1
	1/8	N79.4 A	1,5 (1,6)*	0,05	0	7	7	W	0,14	1

Note: 1) NP (nominal pressure): 25 bar. (2) * Discharge diameter.



Fittings Ø G	A	B	C	D
["]	[mm]	[mm]	[mm]	[mm]
1/8	30	56	14	35

ORDER CODE	VE	N79.4	V	[V]	[Hz] / d.c.					
	COMPLETE VALVE	FITTINGS	SEAL	Coil type	24 V / 60 Hz	115V / 50/60 Hz	220-230 V / 50/60 Hz	240 V / 50/60 Hz	12 V d.c.	24 V d.c.
		I 1/8"	V Viton	WB 4,5	●	●	●	●	●	●
		A 1/8"		WB 5,0						
	SERIES			Coil type	24 V / 60 Hz	110-120 V / 60 Hz	208-240 V / 60 Hz			
				WB 4,5 UL	●	●	●			

Note: Valve supplied with coil in a multipack. Connector to be ordered separately.